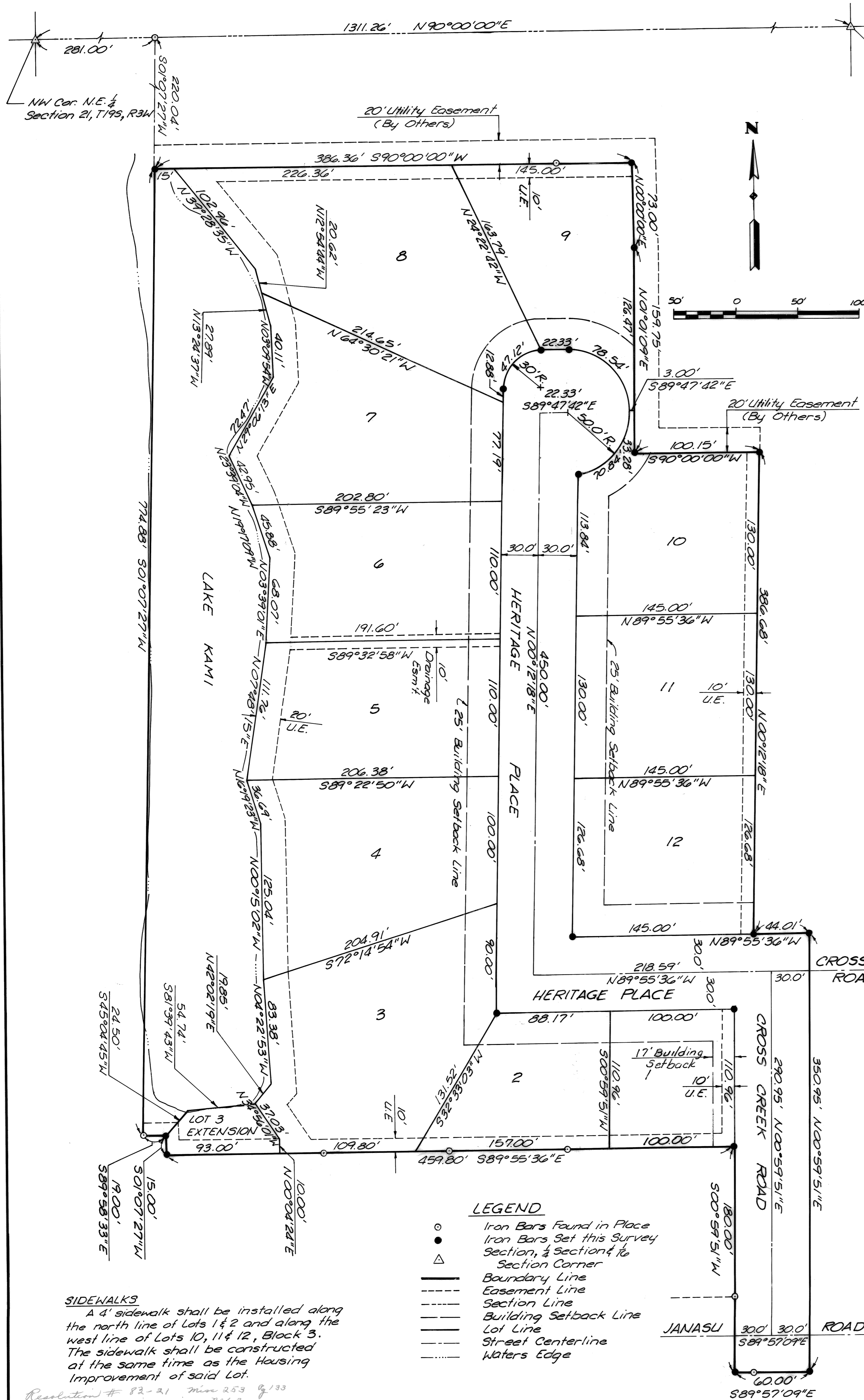


COUNTRYSIDE LAKE II, BLOCK 3

AN ADDITION TO THE CITY OF McPHERSON, KANSAS



SURVEYOR'S CERTIFICATE AND DESCRIPTION:

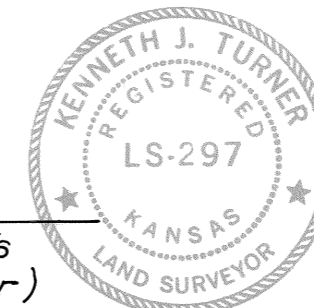
I, the undersigned, licensed professional (engineer and/or surveyor) of the State of Kansas, do hereby certify that the following described tract of land was surveyed on October 9, 1983 and the accompanying final plat prepared and that all the monuments shown herein actually exist and their positions are correctly shown to the best of my knowledge and belief:

A tract of land situated in the NW 1/4 of the NE 1/4 of Section 21, Township 19 South, Range 3 West of the Sixth Principal Meridian, McPherson County, Kansas and being more particularly described as follows: Commencing at the Northwest Corner of the Northeast Quarter (NE 1/4) of said Section 21; thence on an assumed bearing of N90°E along the north section line of said section 21, a distance of 281.00 feet; thence S01°07'27"W, a distance of 220.04 feet to the POINT OF BEGINNING; thence continuing S01°07'27"W, a distance of 774.88 feet; thence S89°58'33"E, a distance of 19.00 feet; thence S01°07'27"W, a distance of 15.00 feet; thence S89°55'36"E, a distance of 459.80 feet; thence S00°59'51"W, a distance of 180.00 feet; thence S89°57'09"E, a distance of 60.00 feet; thence N00°59'51"E, a distance of 350.95 feet; thence N89°55'36"W, a distance of 44.01 feet; thence N00°12'18"E, a distance of 386.68 feet; thence S90°00'00"W parallel with the north section line, a distance of 100.15 feet; thence N01°01'09"E parallel with the east line of the NW 1/4 of the NE 1/4 of said Section 21, a distance of 159.75 feet; thence N00°00'00"E, a distance of 73.00 feet; thence S90°00'00"W parallel with the north section line, a distance of 386.36 feet to the POINT OF BEGINNING.

The above described tract of land contains 8.784 acres, more or less.

Signed October 9, 1983

Kenneth J. Turner LS. 297
(Engineer's and/or Surveyor's Name and License Number)



COUNTY CLERK AND CITY CLERK CERTIFICATE:

STATE OF KANSAS }
COUNTY OF McPHERSON } SS
CITY OF McPHERSON

We, the undersigned, County Clerk of McPherson County, Kansas, and City Clerk of the City of McPherson, Kansas, within our respective jurisdictions, do hereby certify that at the date of this certificate, all currently due and owing taxes and special assessments of any kind assessed against any of the land included in this plat, have been paid.

Date Signed: November 10, 1983
Margaret Bryan
County Clerk

Date Signed: 11-4-83
William J. Boering
City Clerk

CERTIFICATE AS TO CITY PUBLIC IMPROVEMENTS:

STATE OF KANSAS }
CITY OF McPHERSON } SS

We, the undersigned, do hereby certify that the required guarantees are posted with City for the completion of the improvements covering all streets, storm sewers, sanitary sewer system, and domestic water supply and distribution system pertaining to the subject plat and not under other Federal, State, or County completion obligations; which are based on a licensed engineer's plans and specifications; and which are approved by all public authorities having jurisdiction.

Date Signed: 10/26/83
Shirley J. Tracy
City Engineer,
City of McPherson, Kansas

Date Signed: 11-4-83
William J. Boering
General Manager of
Board of Public Utilities,
City of McPherson, Kansas

OWNER'S CERTIFICATION AND DEDICATION:

STATE OF KANSAS }
COUNTY OF McPHERSON } SS

This is to certify that the undersigned owner(s) of the land described in the Surveyor's Certificate; have caused the same to be surveyed and subdivided on the accompanying plat into lots, blocks, streets and other public ways under the name of "COUNTRYSIDE LAKE II, BLOCK 3"; (an addition to the City of McPherson, McPherson County, Kansas); that all highways, streets, alleys, easements and public grounds as denoted on the plat are hereby dedicated to and for the use of the public for the purposes of constructing, operating, maintaining and repairing public improvements; and further that the land contained herein is held and shall be conveyed subject to any applicable restrictions, reservations, and covenants now on file or hereafter filed in the Office of the Register of Deeds of McPherson County, Kansas.

Robert E. Priddy 10-29-83
Date
Rita K. Priddy 10-29-83
Date

NOTARY PUBLIC CERTIFICATE:

STATE OF KANSAS }
CITY OF McPHERSON } SS

The foregoing instrument was acknowledged before me this 29 day of October, 1983, by Robert E. Priddy and Rita K. Priddy, his wife

Deborah A. Beach Notary Public
My Commission expires: _____

CITY ATTORNEY'S CERTIFICATE:

STATE OF KANSAS }
CITY OF McPHERSON } SS

This plat is approved pursuant to the provisions of K.S.A. 12-401.

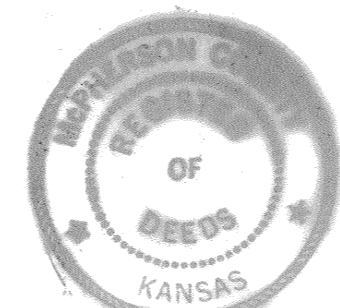
Date Signed: Nov. 9, 1983

William J. Boering --RO. 2013
City Attorney

REGISTER OF DEEDS CERTIFICATE:

STATE OF KANSAS }
CITY OF McPHERSON } SS

4467
This instrument was filed for record on the 10 day of November, A.D. 1983.
at _____ P.M. and duly recorded in _____ page 73
Deborah A. Beach
Register of Deeds



PLANNING COMMISSION CERTIFICATE:

STATE OF KANSAS }
CITY OF McPHERSON } SS

This plat was approved by the McPherson City Planning Commission on October 11, 1983, and was recommended for approval by the Governing Body of the City of McPherson, Kansas.

Signed: 11-10-1983

William W. Harty, Chairman
ATTEST: Richard Tamm, Secretary

GOVERNING BODY CERTIFICATE:

STATE OF KANSAS }
CITY OF McPHERSON } SS

This plat approved and all dedications shown hereon, if any, are hereby accepted by the Governing Body of the City of McPherson, Kansas, on 11-4-83, 1983.

William J. Boering
ATTEST: City Clerk

Deborah E. Priddy
APPROVED: Mayor
William J. Boering
City Attorney

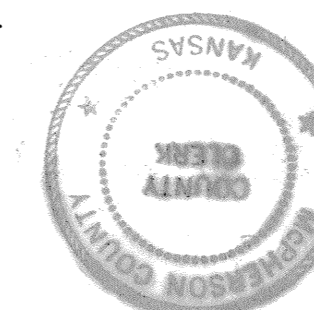
COUNTY COMMISSIONERS' CERTIFICATE:

STATE OF KANSAS }
COUNTY OF McPHERSON } SS

The dedications shown on this plat are hereby accepted by the Board of County Commissioners, McPherson County, Kansas on November 10, 1983.

Entered on transfer record on November 10, 1983
Margaret Bryan
County Clerk

Richard Tamm
Commission Chairman
Margaret Bryan
ATTEST: County Clerk



SIDEWALKS
A 4' sidewalk shall be installed along the north line of Lots 1 & 2 and along the west line of Lots 10, 11 & 12, Block 3. The sidewalk shall be constructed at the same time as the Housing Improvement of said Lot.

Resolution # 82-21 Min 253 of 133
all notes 1-12 inclusive 2/83